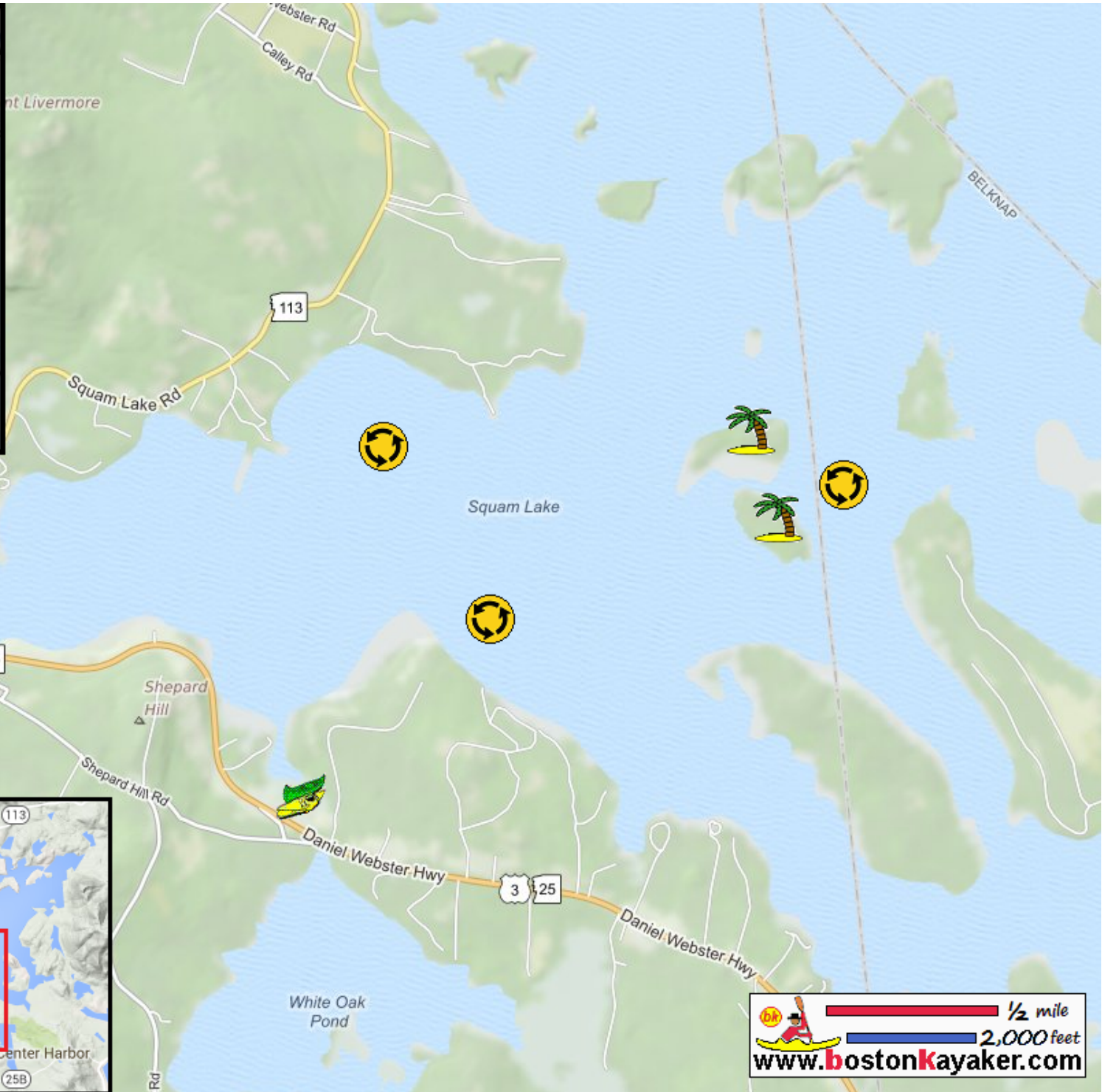


Kayaking on Squam Lake - in Holderness NH



www.bostonkayaker.com

- Put in at Route 113 ramp in Holderness NH.
- Paddle to the islands and return.
- Estimated round trip distance = 6+ miles
- SLA kayak rentals. Alternate put in.
- Can beach and picnic on the islands.
- Squam Lakes Natural Science Center