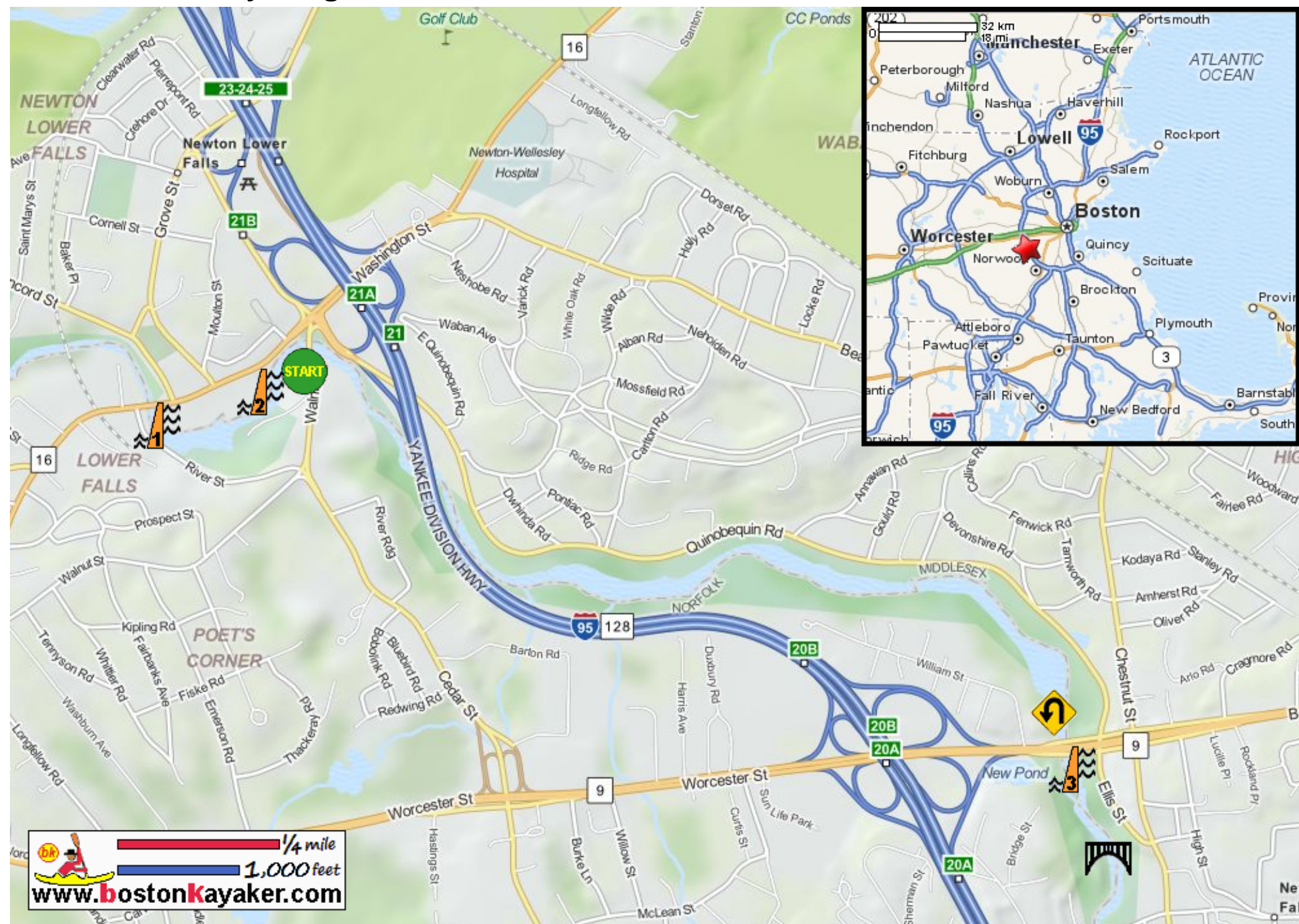


Kayaking on Charles River - from Lower Newton Falls MA to Upper Newton Falls MA



Put in at Walnut Street in Lower Newton Falls MA.
 Paddle upriver to Route 9 and return.
 Estimated round trip distance = 4 miles
 Finlay Dam
 Cordingly Dam
 Horseshoe Dam
 Echo Bridge