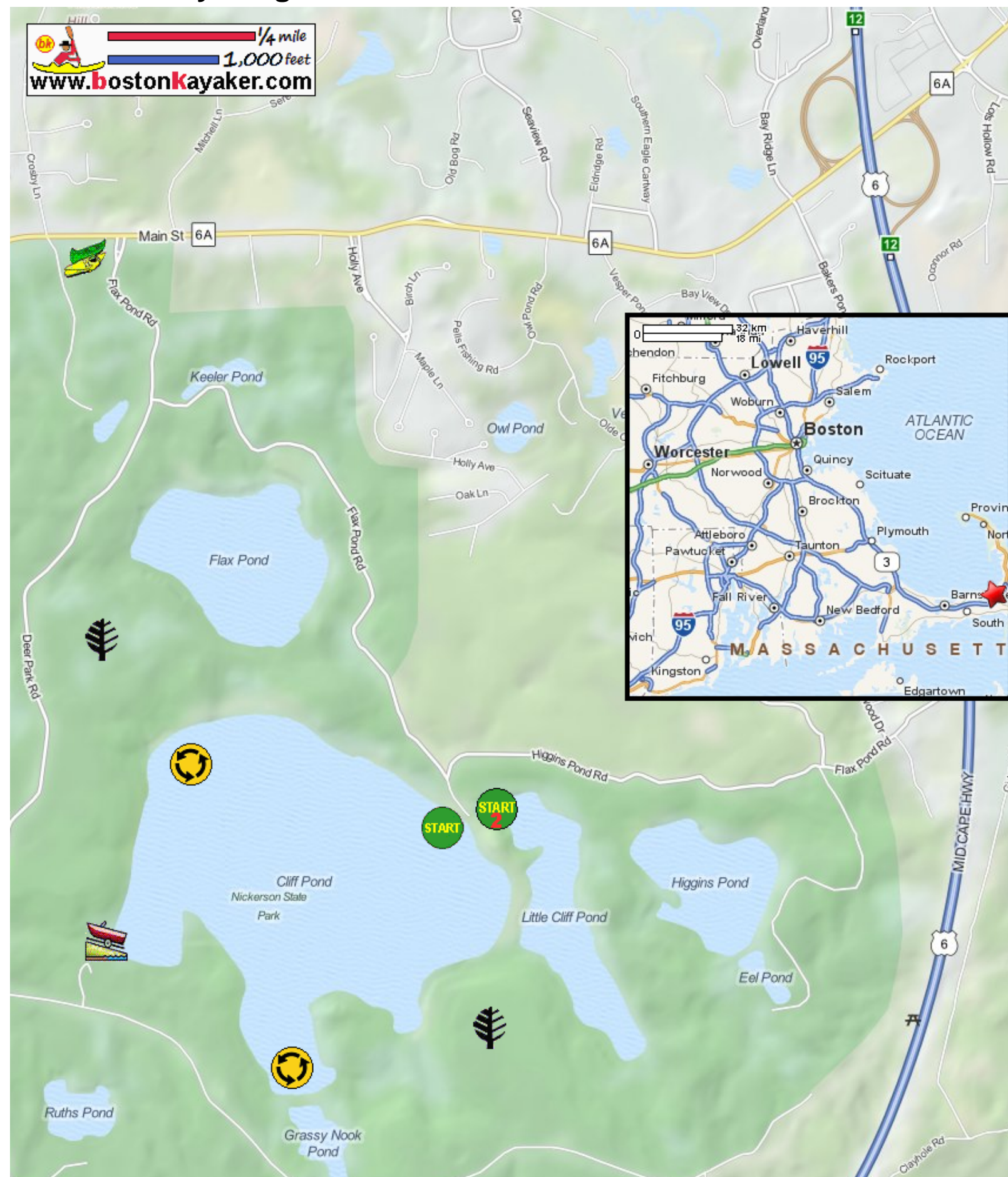


# Kayaking on Cliff Pond - at Nickerson State Park in Brewster MA



Put in at Flax Pond Road in Brewster MA.



Paddle around Cliff Pond and return.



Estimated round trip distance = 2 miles



Alternate put in at Nook Road ramp.



Put in for Little Cliff Pond.



Nickerson State Park



Jack's Boat Rentals