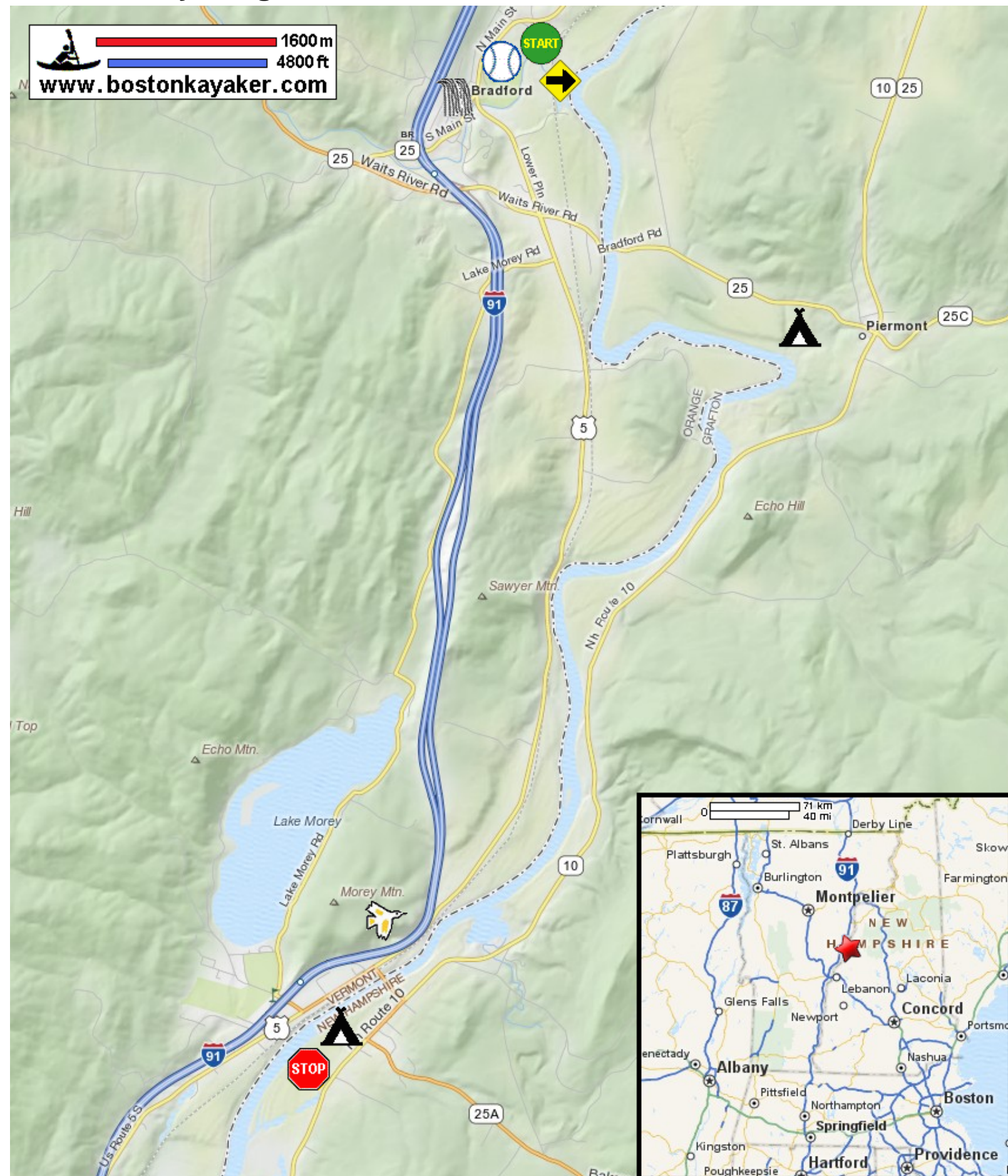


Kayaking on Connecticut River - from Bradford VT to Orford NH



Put in at Memorial Field on Dow Meadow Lane in Bradford VT.



Paddle out of Waits River and turn right on CT River.



Take out at Boat Landing Road in Orford NH.



Estimated distance = 9 miles



The Palisades hosts a cliffside peregrine aerie.



Memorial Field



Bradford Falls and dam



River access camp sites