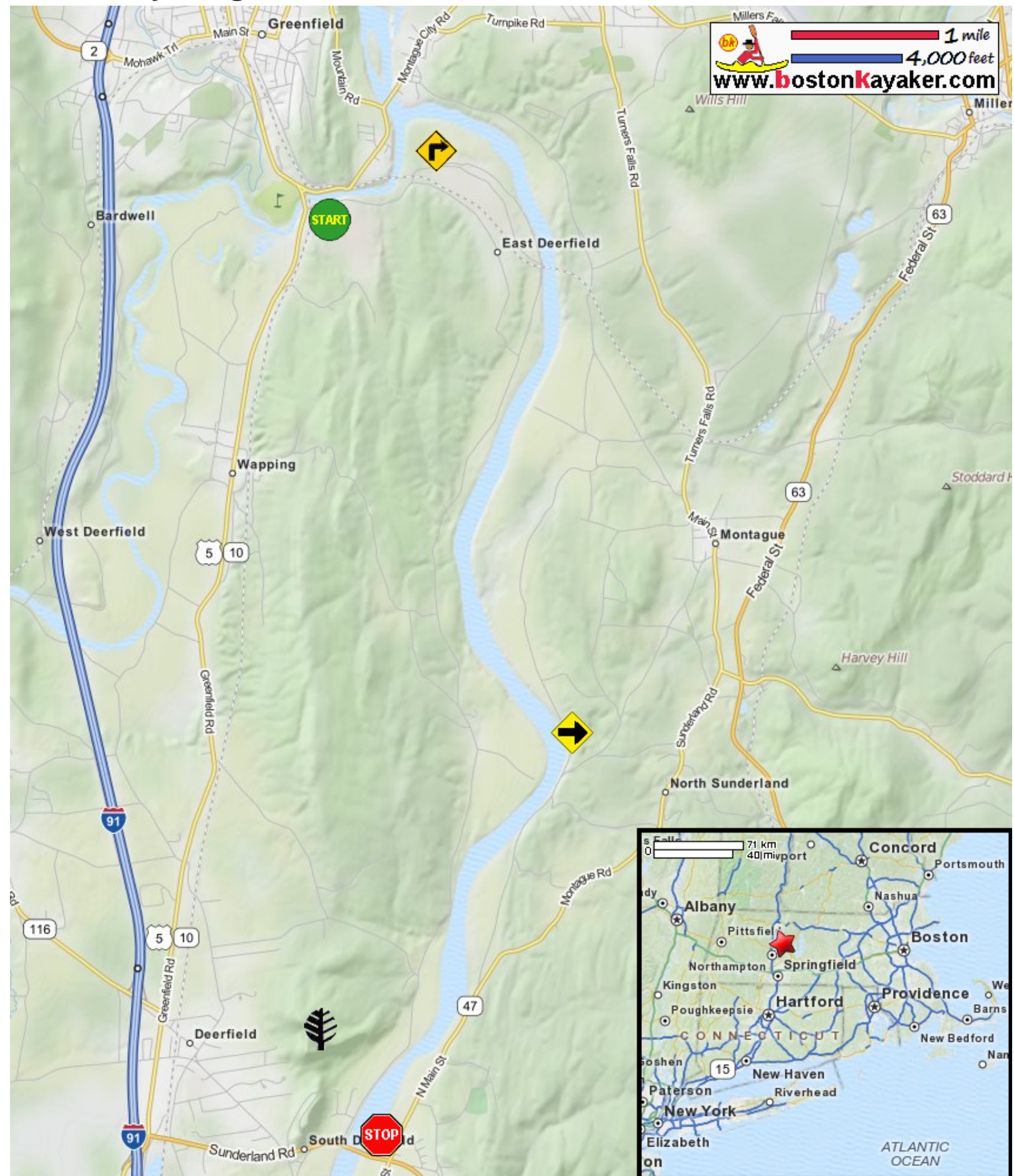


Kayaking on Connecticut River - from Deerfield MA to Sunderland MA



Put in at Deerfield River on River Road / Route 5 bridge in Deerfield MA.



Turn right at the confluence with Connecticut River.



Take out at Sunderland ramp on Route 116 in Sunderland MA.



Optional side-trip to Cranberry Pond Brook on river left (west).



Estimated distance = 11.5 miles



Mount Sugarloaf State Reservation