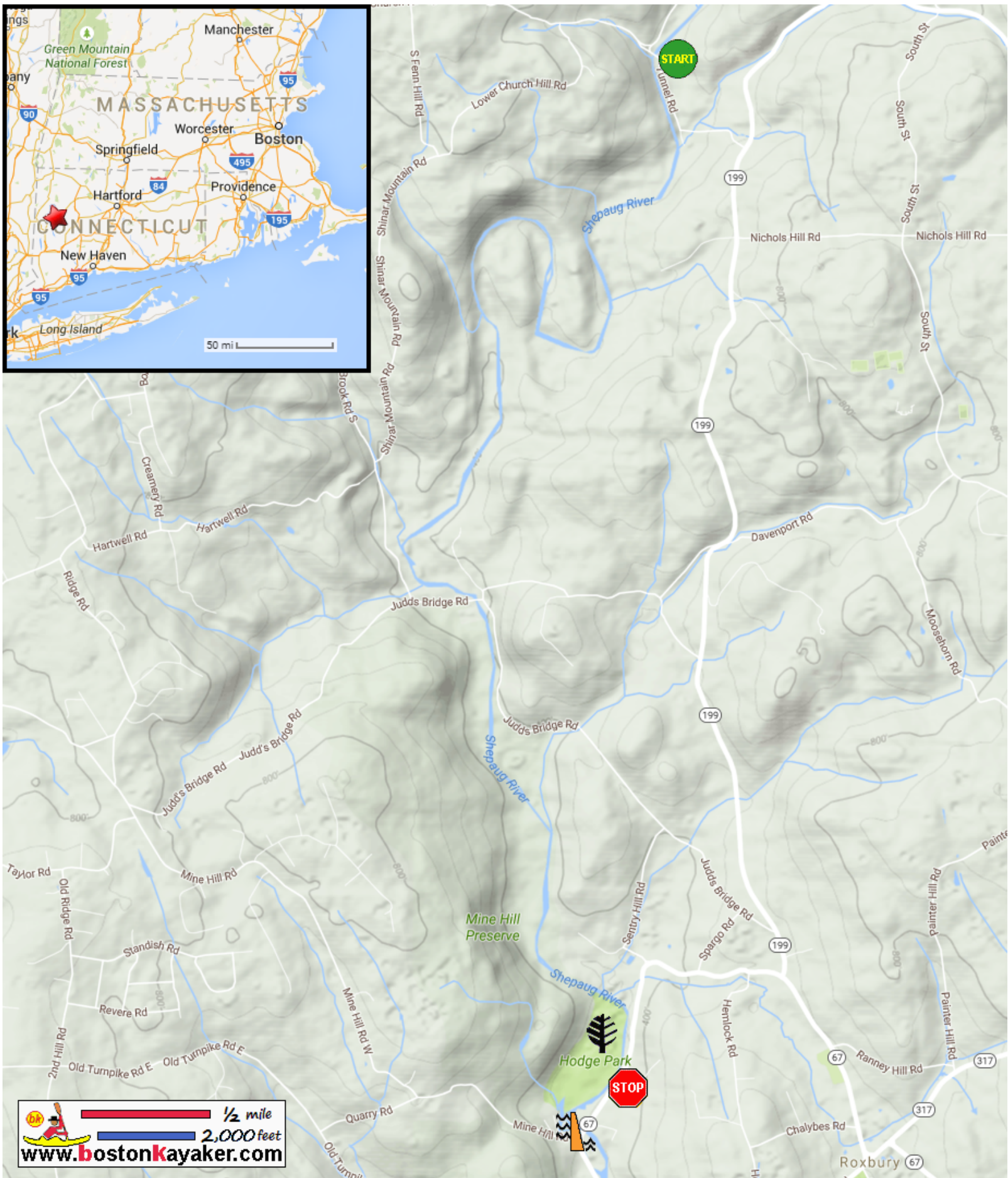


Kayaking on Shepaug River - from Washington Depot CT to Roxbury CT



Put in at Steep Rock Reservation on
Tunnel Road in Washington Depot CT.



Take out at Baker Road / Route 67
in Roxbury CT.



Estimated distance
= 6+ miles



Best to paddle when Woodville
river gauge > 100 cfs.



Roxbury Station
Dam



Hodge
Park