

For fishing regulation information, please refer to the NHFGD Freshwater Fishing Digest.

Contact: NHFGD Region 4 (Southwest NH), Keene  
E-mail: [reg4@wildlife.nh.gov](mailto:reg4@wildlife.nh.gov) Phone: 603-352-9669

## LAKE WINNEPOCKET Webster

**FISHERY:** Warmwater **ACRES:** 229

**TROPHIC LEVEL:** OLIGO

**AVG. DEPTH:** 19 **MAX. DEPTH:** 67

**SPECIES:** RT,SMB,LMB,ECP,HP

**ADDITIONAL INFO:** speed limit

**ACCESS:** boat launch for town residents only

Please contact NH Dept of Safety, Marine Patrol for info. on water body/boat/motor restrictions:  
(603) 293-2037 [www.nhmarinepatrol.com](http://www.nhmarinepatrol.com)

**Public Water Access site**



Canoe/cartop



Shorebank



Ramp

Bathymetric contour (feet)

Bathymetry provided by the NH Department of Environmental Services, Watershed Mgt Bureau

Town boundary

Primary Route

Road or Street

Trail or other

Stream or Shoreline

Surface Water

Wetland

Conservation or Public land

Cleared

Forest

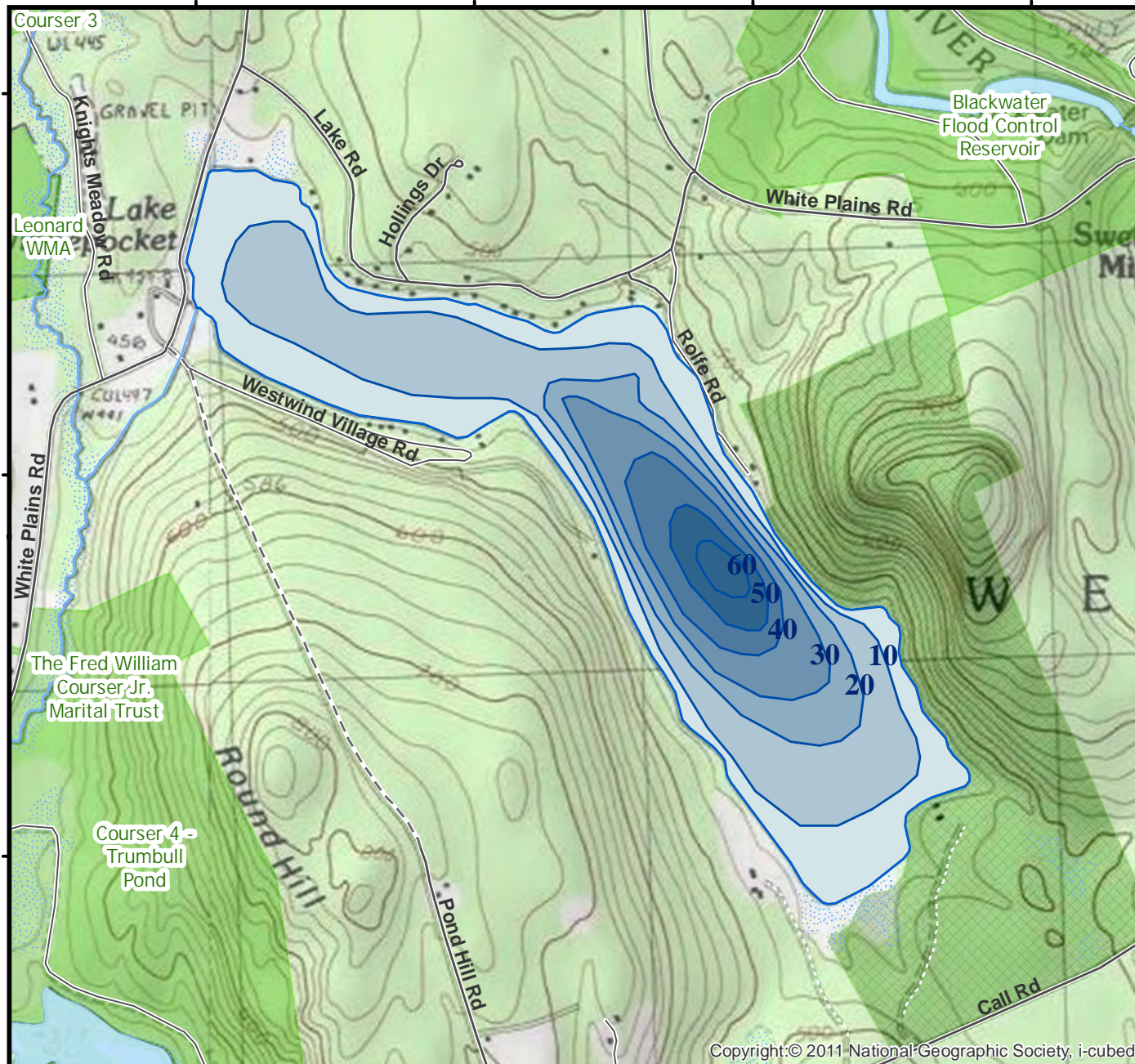
Contour

Building

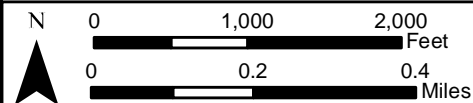
Source: USGS

Restricted Access

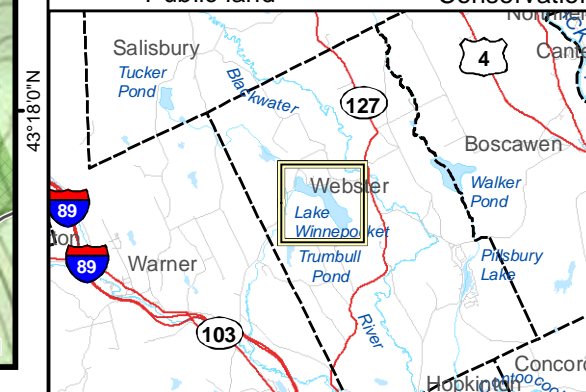
Conservation



Copyright:© 2011 National Geographic Society, i-cubed



Most data presented on this map represent stock data sets obtained from NH GRANIT, Complex Systems Research Center, UNH. CSRC, NHOEP, NHFGD and the cooperating agencies make no claim as to the validity or reliability or to any implied uses of these data. NOT FOR NAVIGATION.



**Directions:** White Plains Rd